



Welcome to the Festival of Fishkeeping Information Update pages

This will be the place to find all the latest information about this year's Festival.

To date, there is a Press Release, three different Posters and a Show Schedule.

Societies are invited to publicise the Festival as much as they can, as this event (at a new venue) deserves to succeed – as well as bringing a much larger public in to marvel at all the excitement of fishkeeping.

Please feel free to distribute reprints of the Posters to your local aquatic retailers and, of course, feature them as much as possible in any of your Society's publications – Newsletters, Show Schedules etc.

A late item of breaking news is that if any exhibitor wishes to bring camping equipment (or even a caravan) to the venue, permission has been obtained to allow on-site residency for the period of the Festival – Friday to Monday morning only.

At the moment, research is being done to arrange accommodation at a nearby hotel, and news of this, together with prices and booking arrangements, will appear here in due course.



PRESS RELEASE



Festival of Fishkeeping 2013 **7th & 8th September**

**Hounslow Urban Farm,
Faggs Road,
Feltham, Middlesex TW14 OLZ
(www.hounslowurbanfarm.co.uk)**

The venue is a widely popular attraction specialising in explaining how a farm works to children unfamiliar with country living. As well as the usual farm animals there are both very rare breeds and unusual ones like chipmunks and alpacas.

So, what's a fish-orientated event doing on a farm?

The answer is increased exposure for the hobby on one hand and an added attraction for the site on the other.

There are many Fish Shows held around the UK every year, if you know where to find them, and this event is a development of the Federation of British Aquatic Societies' longstanding annual Festival of Fishkeeping.

By moving location to a long-established, already popular 'animal interest' site, fishkeeping can now reach far more potential supporters rather than just preaching to the converted.

At this event, there will be UK's biggest display of Hobbyist Fish, Independent Traders, Japanese Koi Carp and Discus Displays, Pond Display, Furnished Aquariums, Demonstrations on how to set up, furnish and maintain various types of aquariums and advice on all aspects of fishkeeping.

Because of the 'competitive' aspect of some displays, you will be able to see the very best quality of fishes all in full adult size and in prime condition. What better place to go and learn about fish, before you commit time and money at your local aquatic store?

The new Venue has a lot of scope to make Festival of Fishkeeping a truly family weekend.

We are very grateful to all our sponsors because without them there would be no Festival. We are pleased to welcome back as a sponsor Mars Fish Care (Aquarian).

Over the weekend there will be Aquarian /API Kids' Zone for children of all ages, from Face Painting, Bouncy Castles, Find the Fish Hunt, Colouring Competitions with prizes for 1st 2nd and 3rd place winners. There is also a Petting Zoo, Birds of Prey displays, Feed the Animals and Animal Rides. There will be goodie bags for the children and lots more.

Come and spend the whole day with all the family.

There are lots of Hotels and Travel Lodges within easy reach of the Farm. For those that will be staying for the weekend there will be a Barbeque on Saturday evening, with Cabaret Entertainment.

For more information, please contact

Joe Nethersell, Festival Organiser on 020 8847 3586
or email joenethersell@gmail.com



Festival of Fishkeeping

Sat-Sun 7th & 8th September
10am-5pm

UK's Biggest Display Of Hobbyist Fish
Sponsors & Independent Traders

Japanese Koi Carp

Discus Display

Pond Display

Furnished Tank

Demonstration on How to Furnish a Tank

Advice on all aspects of Fishkeeping

Family Fun at the Urban Farm

Children Petting Zoo

Bouncy Castles

Bird of Prey Display

Feed the Animals

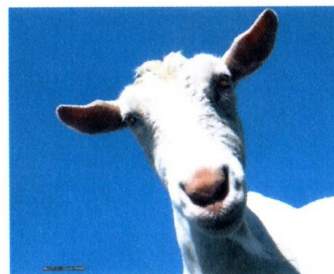
Small children's Play Zone

Food & Drinks

Animal Rides

Spitting Llamas

Children's Activities



Trade Stand Enquiries
joenethersell@gmail.com



0208 847 3586
07970 106434

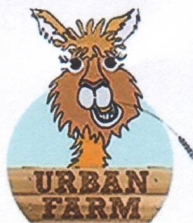
Sponsors of the Festival 2013



NUTRAFIN



Practical
Fishkeeping



Urban Farm are proud to host

Festival of Fishkeeping



Children Petting Zoo

Bouncy Castles

Bird of Prey Display

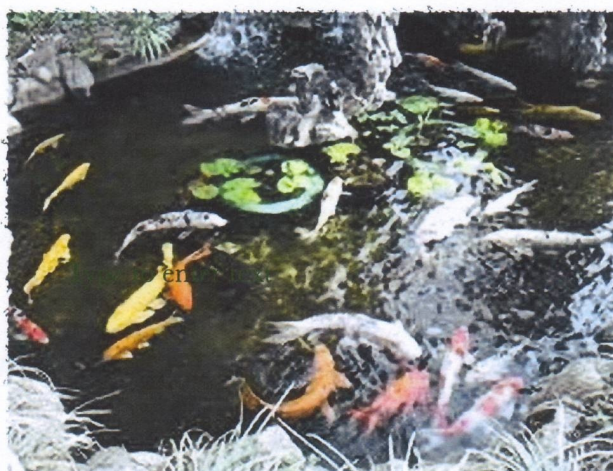
Feed The Animals

Play Zone

Food & Drink

Animal Rides

Spitting Llamas



Koi Display

Goldfish

Killfish Show

Jinchu Kai

Discus

Hagen Exo Terra Reptiles

Aquariums

Help from the Pro's



**September 7th & 8th 2013 at
Hounslow Urban Farm Open from 10am to 5pm**

British Open Final - Saturday

Festival Aquarist Society Master Open Show - Sunday

Goldfish Society Show on Saturday & Sunday

FBAS Supreme Championship Pairs & Breeders Saturday

Diamond Class - Sunday

Speaker from the Aquatic and Water Gardening Worlds

Contact Us On: 07970 106434 or 0208 847 3586

Email us :joenethersell@gmail.com



The Biggest Names in the Industry will be at the Festival



FLUVAL



Laguna



Tetra



**Practical
Fishkeeping**



NUTRAFIN



AQUARIAN

The Biggest Names in the Industry will be at the Festival



FLUVAL



Laguna



Tetra



**Practical
Fishkeeping**



NUTRAFIN



AQUARIAN

Festival of Fishkeeping

Sat-Sun 7th & 8th September 2013



This Year's Events

- ★ Festival Aquarist Society
- ★ Masters Open Show (Sunday)
– sponsored by Hagen
- ★ Goldfish Society Show on
Saturday & Sunday
sponsored by Festival AS
- ★ Pond Display – Anglo Aquarium Plant
- ★ FBAS Supreme Championship
Pairs & Breeders (Saturday)
& Single Fishes (Sunday)
sponsored by Tetra
- ★ Diamond Class – Sunday
- ★ British Open Final (Saturday)
sponsored by Tetra
- ★ Killifish Show (Saturday & Sunday)
- ★ Jinchu Kai UK Ranchu
Specialist Goldfish
- ★ UK DA Discus Show sponsored
by Tetra
- ★ Society & Individual Furnished
Aquaria sponsored by Tetra
- ★ Ladies Furnished Aquaria
sponsored by Aqua One
- ★ Hagen ExoTerra Reptiles
Display & Handling Area
- ★ Speaker from the Aquatic and
Water Gardening Worlds
- ★ Furnished Aquariums, ponds, &
Water Gardens Displays,
Reptiles, Society & Trade
Displays
- ★ FBAS Stand for advice and
information



Family Fun at the Urban Farm

- Children Petting
Zoo
- Bouncy Castles
- Bird of Prey Display
- Feed the Animals
- Small children Play
Zone
- Food & Drinks
- Animal Rides
- Spitting Llamas
- Children's Activities



Contact Us : Mobile 07970 106434 Tel: 0208 847 3586 Email: joenethersell@gmail.com
www.fbas.co.uk



Created by experts to bring out the best in your fish



Superior to flakes

Excellent fish condition

Two formulas in one

Better water quality

Fish prefer Crisps!

The health and condition of your fish directly depends on the diet you choose for them. That's why Tetra's industry-leading research laboratories developed TetraPro Crisps, to overcome the drawbacks of flake foods. Produced at a lower temperature, and using a completely different production process, TetraPro offers better nutrition for unrivalled health and condition. It also results in less waste production, for improved water quality and clarity. The two-colour process used to make TetraPro also allows the introduction of two formulas into one food, for concentrated benefits on top of a complete, balanced diet. What's more, fish prefer Crisps to flakes, meaning they get a diet they love, as well as one that keeps them in great shape.

For more information: www.tetra.net



FESTIVAL A.S. SHOW SCHEDULE

Sponsored by Rolf C Hagen

Show to be judged to FBAS Rules

SUNDAY 8th September 2013

**Hounslow Urban Farm, Faggs Road,
Feltham, Middlesex TW14 OLZ**

**FBAS TROPHY CLASSES -
(Winners qualify for 2014 'Supreme')**

Additional Schedules can be downloaded from www.fbas.co

AWARDS

1st, 2nd, 3rd and 4th Places
Championship Class
Best in Show

Card & Rosette
Trophy Pin
Award & Certificate

Aquatic goods donated will be given to all exhibitors.

RULES

1. Show will be run in accordance with FBAS Show rules.
2. All breeders classes to consist of **FOUR** fish per entry no older than 14 months on the day of the Show.
3. Gravel is **NOT** allowed except in Classes Ag, Ak and Z.
4. The organisers will not be held responsible for any loss or damage to any exhibit for whatever reason or cause.
5. Water - Use of local water is entirely at the risk of the exhibitor and water quality is the responsibility of the exhibitor. It is strongly advised that exhibitors bring sufficient mature water with them.
6. DEFRA listed fish for which a licence is required – it will be taken for granted that by your action in entering any DEFRA listed fish in this Show that you will have a valid licence for that fish in your possession.
7. Entry Fees - **FREE ENTRY FOR EXHIBITORS RESIDENT FOR THE WEEKEND**

FINAL RESIDENT ENTRIES BY 6pm 7/9/2013

NON RESIDENTS - 50p per Entry.

**All entries NOT pre-booked on the day of the Show - 50p per entry
(including residents) pre-booked entries by 6pm Saturday 7th September 2013**

8. Benching times - from 9.00 am to 11.30 am.
9. Judging will start at 12.00 noon - prompt.
10. De-benching will not be permitted until announced by the Show Secretary.

ENTRIES

POSTAL ENTRIES (BY 31st AUGUST 2013) TO:

SHOW SECRETARY, Adrian Dempsey
194 Greenhill Road, Greenhill,
Herne Bay, Kent CT6 7RS

Telephone Entries Until 6pm Saturday 7th September 07777 678135

Email: <mailto:fbasopenshowentry@hotmail.co.uk>

JUDGES

As appointed from those Judges attending the Festival as residents

LIST OF CLASSES

Ag	MINI FURNISHED
Ak	AQUASCAPES
B	BARBS (as current FBAS size sheet)
Ba	BARBS (as current FBAS size sheet)
C	CHARACINS (other than Ca)
Ca	CHARACINS (as FBAS size sheet)
Cb	CHARACINS (as FBAS size sheet)
D	CICHLIDS (other than Da, Db & Dc)
Da	ANGELFISH (<i>Pterophyllum</i>)
Db	DWARF CICHLIDS
Dc	RIFT VALLEY CICHLIDS
E	ANABANTIDS (other than Ea)
Ea	FIGHTERS (<i>Betta splendens</i>)
F	KILLIFISH
G	CATFISH
H	CORYDORAS ETC.
Ha	ASPIDORAS, BROCHIS
J	RASBORAS
K	DANIOS
L	LOACHES
La	BOTIA (as current FBAS size sheet)
M	AOV TROPICAL EGGLAYER
Ma	AOV EGGLAYER (as current FBAS size sheet)
Nb-m	SEXED PAIRS (Tropical Egglayer)
No-t	SEXED PAIRS (Livebearers)
O a-q	MALE GUPPY
O s-y	FEMALE GUPPY
P	CULTIVATED LIVEBEARERS
Q	LISTED SPECIES (as current FBAS size sheet)
R	POECILIA & LIMIA (other than O & P)
S	LISTED SPECIES (as current FBAS size sheet)
T	LISTED SPECIES (as current FBAS size sheet)
Ta	GOODEIDAE
U	SINGLE TAIL GOLDFISH
V	TWINTAIL GOLDFISH
W	AOV COLDWATER FISH
Xb-m	BREEDERS (Tropical Egglayers)
Xo-t	BREEDERS (Tropical Livebearers)
Xu-w	BREEDERS (Coldwater Fish)
Z	AQUATIC PLANTS

FLUVAL EDGE

ADD DESIGN TO YOUR LIFESTYLE

Aqua One



All AquaStart aquariums come complete with a reliable, easy to maintain filtration system and built-in lighting.



Add one of our stylish cabinets in Black Ash or Oak finish and transform your aquarium into a stunning piece of living room furniture.

Total dimensions:
AquaStart 500 - 65L
 50w x 121h x 34d cm
AquaStart 600 - 80L
 60w x 130h x 31d cm
AquaStart 900 - 165L
 90w x 134h x 40d cm



AQUASTART

AquaStart aquariums are the perfect introduction to fishkeeping, with tanks ranging from 28L to 165L. Whether you are looking for a funky bright coloured tank for the children's bedroom, a stylish tank for the kitchen worktop or a magnificent set up for the lounge, the AquaStart range of bow fronted glass aquariums is ideal.



The AquaStart 600 and 900 offer serious space for more or larger fish species and more imaginative aquascaping. Matching contemporary cabinets will add designer appeal to your home.

Fluval EDGE brings an exciting new look to aquatics, combining the most modern aquarium design with the beauty of nature. The result is an utterly stylish complement to any home or office space.



360° Viewing

Glass top for spectacular views from all angles and less evaporation for reduced maintenance



Clear Healthy Water

Easy to use cascading flow filter with 3 stage filtration for a healthy, oxygenated environment



Clean Lines

The filter and retractable lighting modules are hidden from view for a clean, modern look



For more information visit www.hagen.com

Aquarium dimensions:

AquaStart 320 - 28L

30w x 38h x 33d cm

AquaStart 320T - 36L

30w x 46h x 33d cm

AquaStart 340 - 40L

35w x 44h x 36d cm



AQUASTART 900

Name **Society**

Address **Postcode**

[illegible]

Name **Society**
Address **Postcode**

[illegible]